

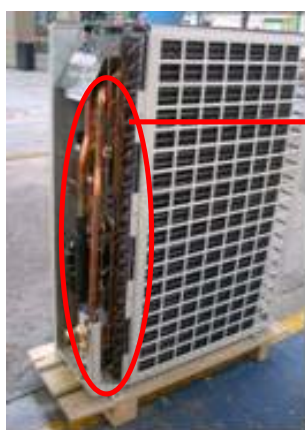
IMPROVEMENT OF DE- ICE OPERATION**MODELS EFFECTED:- CDS160HX & CDS175HX**

GENERAL:- To improve de ice operation on the above units particularly in areas with low ambient & high humidity conditions it is necessary to move the outdoor sensor to a new position & create an improved contact with the return bend in the new position.

METHOD: Locate the outdoor coil sensor on the lower left of the coil end inside the compressor compartment & remove it from the pocket.
Using drawing & photographs supplied locate the new position for sensor, liberally coat the sensor & outside of the return bend with thermal paste & clamp the sensor to the bend using a bracket, clamp or tie. Wrap the sensor & bend tightly with cork insulation tape ensuring the tape seals off the sensor from the air. The cable from the sensor should be kept clear of any potential hot surface & routed in such a way as to protect it from damage.

FIELD SUPPLY MATERIALS REQUIRED:- Bracket, hoseclamp or tie.
Heat Transfer Paste.
Self-adhesive Cork Insulation Tape.

IMPROVEMENT OF DE-ICE OPERATION



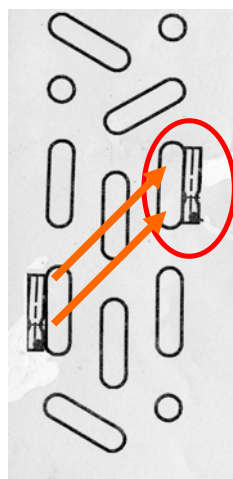
Concerned
part of the
coil



OCT sensor is
located in left-
bottom part of
the coil



Take out OCT
from the tube



New location

OCT = Outdoor coil Sensor.

IMPROVEMENT OF DE-ICE OPERATION

Add thermal paste on the sensor / elbow and fix OCT with the bracket, hoseclamp or tie.



6) Cover completely the tube with cork insulation tape or similar. Please take care of wire position.



ALSO REFER SERVICE BULLETIN SB059.